

uresta®

Bladder Support for Women

A self-managed bladder support made from a thermoplastic elastomer and is not made with natural rubber latex.

A safe, reusable solution that is proven to significantly reduce, or control leaks associated with Stress Urinary Incontinence. Clinical studies showed that **11 out of 21** women saw a significant reduction in leaking, while leaks were completely eliminated for **10 out of 21** women.¹



Indication

The URESTA® bladder support is indicated for use in women over 18 years of age who experience Stress Urinary Incontinence.^{†,2}

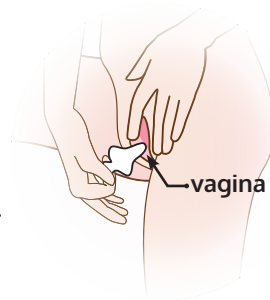
Contraindications

URESTA® is not indicated for use in patients with Urge Incontinence or patients experiencing prolapse or vaginal atrophy.[‡]

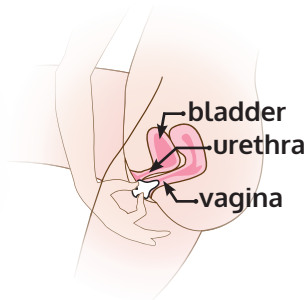
Mode of Action

The URESTA® bladder support is a simple and easy-to-use reusable that really works—the bell shape supports the urethra to help significantly reduce or control leaks.

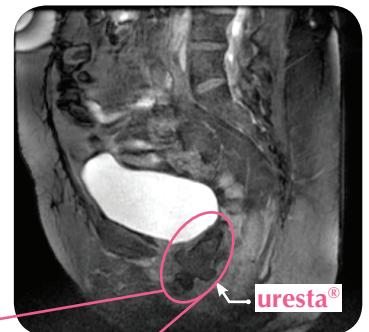
STEP 1



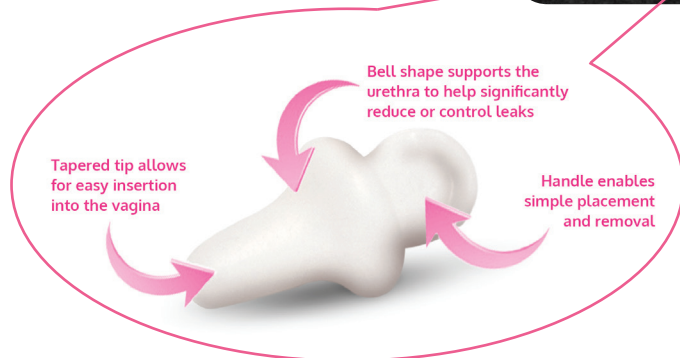
STEP 2



STEP 3



URESTA® is available through your doctor or or available through our mail order pharmacy.



† Indication

The URESTA® bladder support is indicated for use in adult women over 18 years of age who experience stress urinary incontinence (involuntary urine loss, such as a spurt of urine that occurs when you cough, laugh, sneeze, or with some physical tasks).²

‡ Contraindications

Do not use this product:

- If you are under 18 years of age
- If you are pregnant
- During sexual intercourse or menstruation
- If you have had recent vaginal surgery

Do not use the product if you have any of the following:

- Abnormal vaginal bleeding or excessive vaginal discharge and/or foul odour associated with discharge
- Vaginal soreness or itching

Precautions

If you suffer from pre-existing conditions, such as vaginal dryness or atrophy, please consult a physician prior to using your URESTA® bladder support.

URESTA® is not indicated for use in patients experiencing vaginal prolapse. Please refer to the Product Care Section of the Instruction for Use (IFU) for cleaning instructions of the product. Improper washing and care of the product may lead to a risk of infection.

Replace your URESTA® product as directed in the Product Care Section of the IFU. Failure to do so may lead to improper fit, discomfort, or infection).²

References

1. Farrell SA, Baydock S, Amir B, et al. Effectiveness of a new self-positioning pessary for the management of urinary incontinence in women. *Am J Obstet Gynecol* 2007;196;474.e1-474.e8.
2. URESTA® Instructions For Use.

